

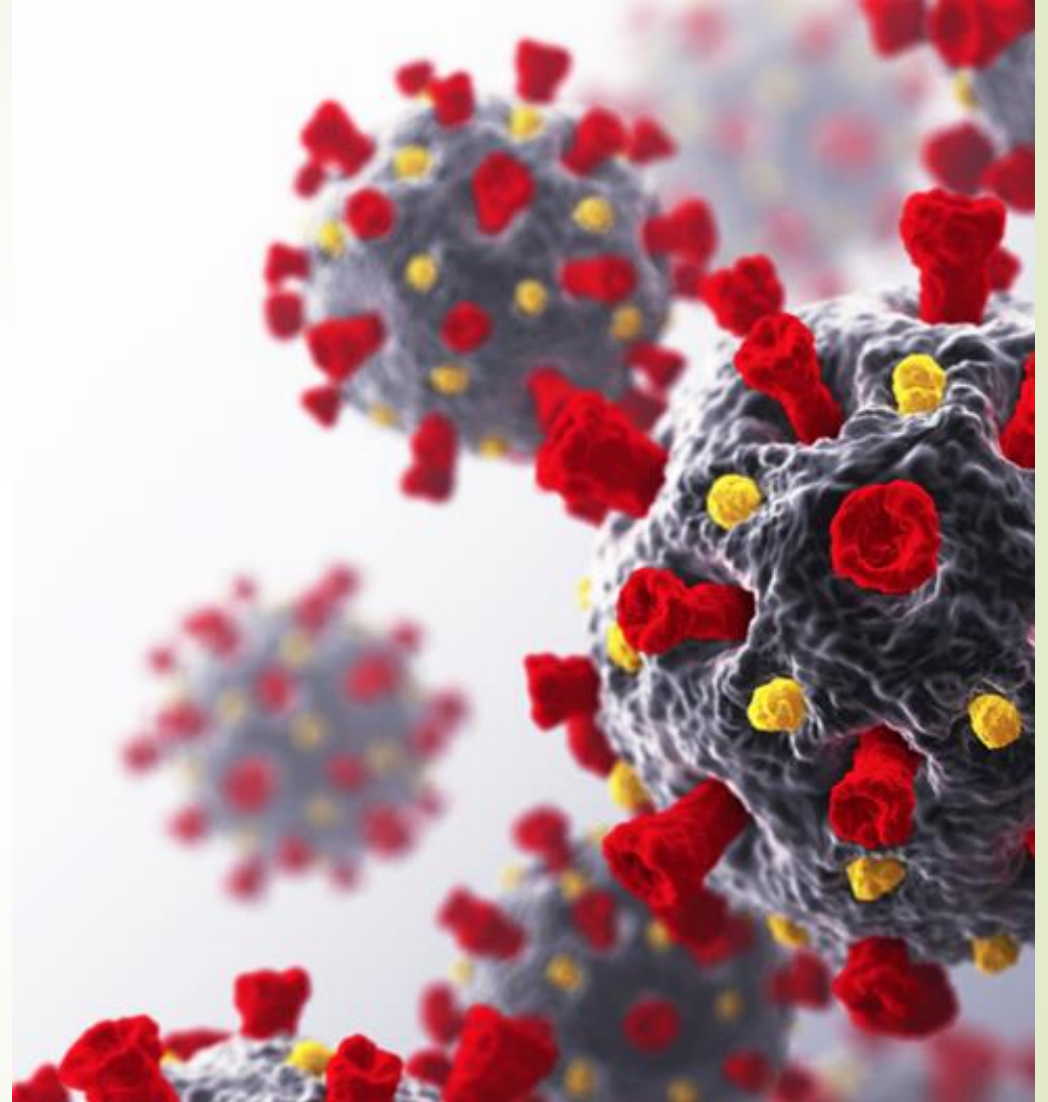
KPWA Senior Caucus UPDATE #17: The Dual COVID and Racism Pandemics

Christine (Himes) Fordyce MD
Family Physician and Geriatrician
KPWA Senior Caucus Monthly Meeting
10/1/21



Overview

- Disease activity
- Implications for hospitals and clinical care
- Vaccinations
- 3rd vaccination and Boosters
- Treatment
- Clinical update

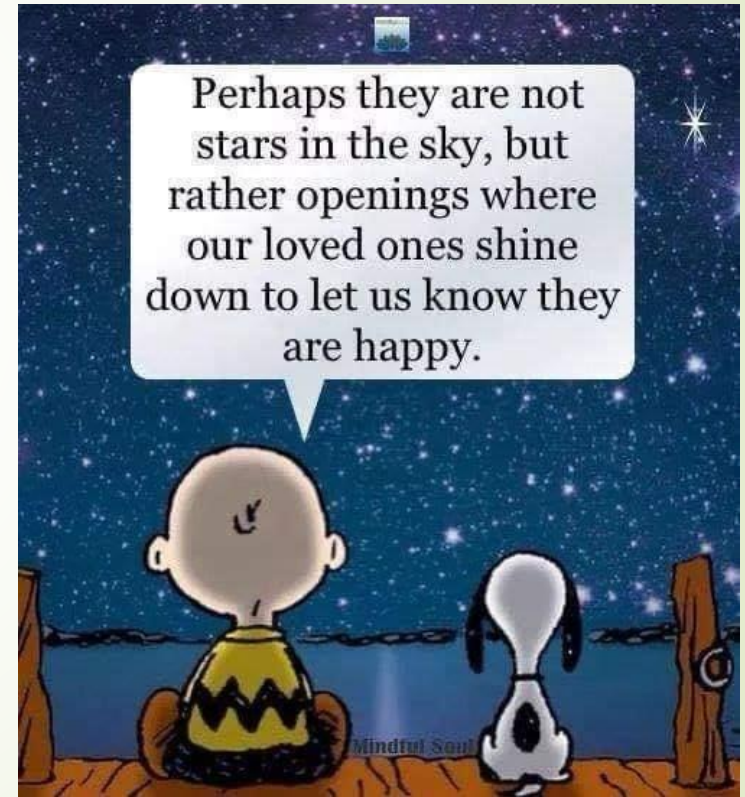


Remembering all the lives lost and those changed forever

Sometimes you
aren't meant to fix it,
but rather walk
through it.

Awaken to your Calling
SusanKerby.com

Perhaps they are not
stars in the sky, but
rather openings where
our loved ones shine
down to let us know they
are happy.



The human toll

As of 9/14/21...

COVID-19 disease activity –

World

- 225,468,280 confirmed cases (17,319,973 in the last 28 days)
- 4,643,152 deaths (267,809 in the last 28 days)

United States

- 41,241,725 confirmed cases (4,317,653 in the last 28 days)
- 662,525 deaths (39,380 in the last 28 days)

Washington

- 542,391 confirmed cases
- 34,054 hospitalizations
- 6,981 deaths

KPWA

Members

- 268,792 tests performed with 19,648 confirmed cases
- 73 currently hospitalized

Staff

- 686 total confirmed cases – WPMG – 65, KFHP – 601, other – 20
- 661 staff have returned to work (WPMG – 64, KFHP – 578, other – 19)

Good news in WA state

- 6th safest state in the country
- 2887 new cases/d, down from ~4000
- 150 new admits/d (peaked at ~500 more than last winter last month)
- 85-95% of those hospitalized and nearly all in the ICU unvaccinated
- ~35 deaths/d (last year peak 41)
- Hospitals under huge strain; Governor has asked for 1000 federal workers to help.

Hospital situation in Washington

Northern Idaho at Crisis Standards of Care (DOH status that allows for increased nurse: patient ratios and decisions related to rationing of care)

ICU Covid cases in WA (*considered in control if $\leq 10\%$*)

- ▲ Spokane: 40-45%
- ▲ Snohomish: 45%
- ▲ Most counties: 30%
- ▲ King County: 25% (accepting transfers from critical access hospitals)

OVERALL at 98% ICU-CCU Capacity statewide

COVID admissions:

Current 1,692; peak last winter 1,152

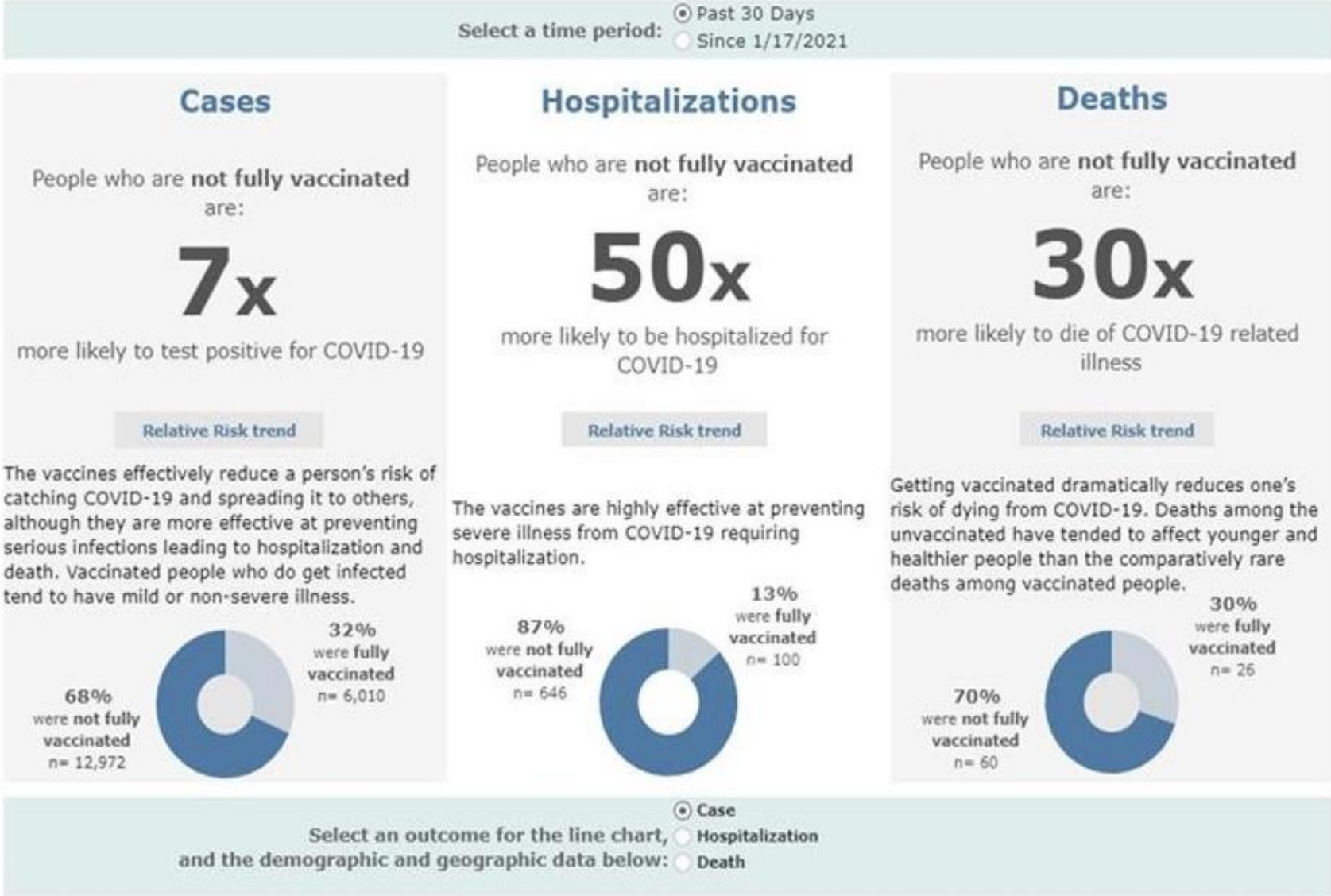
Case Rates:

7-day average 3,388 (high plateau); approx 169 adm per day

SPECIFIC HOSPITAL IMPACT:

- ▲ Virginia Mason-Franciscan Health: 109% capacity
- ▲ St. Michaels: 133% capacity
- ▲ Swedish: 104%
- ▲ MultiCare: 103%
- ▲ Providence – Everett: Called internal Code Triage over last weekend, ICUs are at max capacity
- ▲ St. Peters: 106% full – using conference rooms for surge space, crisis charting, and increased patient to nurse ratios 1:3 in the ICU
- ▲ UW: 96% occupancy, ICU 90% full
- ▲ Harborview: 112-116%

Impact of unvaccinated status on infection/hospitalization/mortality



62 Hospitalized



57 Not Fully Vaccinated
5 Fully Vaccinated

28 in the ICU



28 Not Fully Vaccinated 100%
0 Fully Vaccinated 0%

25 on a Ventilator

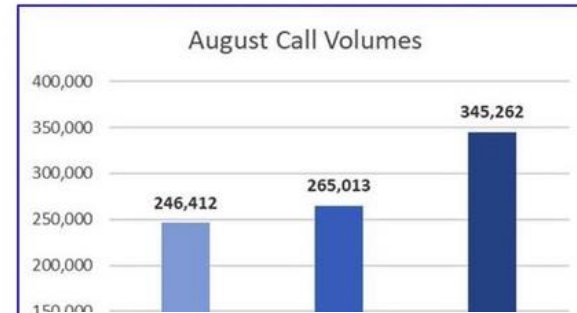


25 Not Fully Vaccinated 100%
0 Fully Vaccinated 0%

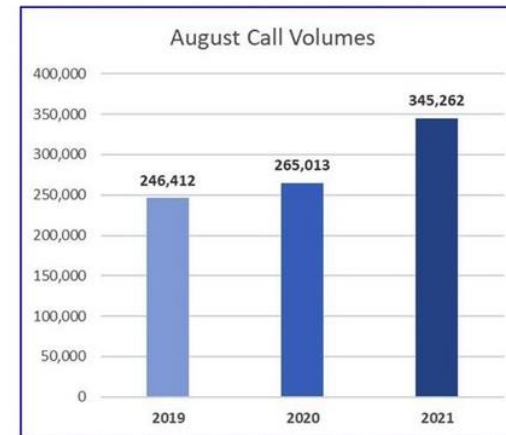
Not Fully Vaccinated: Includes unvaccinated and under-vaccinated (the latter being persons who only received one of the two-dose mRNA regimen). **Fully Vaccinated:** Have completed the vaccine series (either two of mRNA vaccines, or single dose of J&J vaccine).

OHSU Hospital and OHSU Health Hillsboro Medical Center
as of 9/13

Impact of delta surge and care seeking surge on call center




Impact of delta surge and care seeking surge on call center



COVID vaccinations

- ▶ Rate continues to increase with the national average 64% (1 dose) and 55% (2 doses)
- ▶ WA state: 76.12% (1 dose) and ~70% (2 doses), an increase of 4% in the last month
- ▶ Boosters for those who received Pfizer are now available at 6 months post last vaccine and are >65, in long term care, or have chronic medical conditions
- ▶ Moderna and J&J booster data expected to be submitted to the FDA soon
- ▶ Vaccines for children 5-12 expected within the next month.
- ▶ All pregnant women being notified of the dangers of COVID in pregnancy and need for the vaccine asap.





Underlying Medical Conditions in Adults for Pfizer Boosters

The below conditions qualify as an 'underlying medical conditions' according to the CDC.

- Cancer
- Chronic Kidney Disease
- Chronic lung diseases, including COPD (chronic obstructive pulmonary disease), asthma (moderate-to-severe), interstitial lung disease, cystic fibrosis, and pulmonary hypertension
- Dementia or other neurological conditions
- Diabetes (type 1 or type 2)
- Down syndrome
- Heart conditions (such as heart failure, coronary artery disease, cardiomyopathies or hypertension)
- HIV infection
- Immunocompromised state (weakened immune system)
- Liver disease
- Overweight and obesity
- Pregnancy
- Sickle cell disease or thalassemia
- Smoking Tobacco, current or former
- Solid organ or blood stem cell transplant
- Stroke or cerebrovascular disease, which affects blood flow to the brain
- Substance use disorders



New antiviral medications to treat COVID 19

- ▶ At least 3 promising medications being studied with results likely in late fall/early winter
- ▶ Molnupiravir (Merck and Ridgeback Biotherapeutics) being tested in Seattle, PF-07321332 (Pfizer), and AT-527 (Roche and Atea Pharmaceuticals)
- ▶ All must be given as soon as diagnosis is made early in the disease
- ▶ Work by interfering with the virus' ability to replicate within human cells, reducing viral load, and shortening the length of infection which prevents the dangerous immune response that can cause serious illness or death
- ▶ All can be given orally
- ▶ Only remdesivir currently is approved but is intended for seriously ill people who require hospitalization and it is given IV.

Clinic update

- ▶ KPWA is focused on everyone getting the care they need for acute, chronic and preventive care; it's time to catch up with all our reminders
- ▶ Staffing command center set up to respond daily to staffing needs in clinics, vaccination, and testing sites
- ▶ Pilots in Olympia and Spokane focused on identifying members with both medical and social risk putting them at higher risk for infection
- ▶ Continuing high volumes for appointments, chat and nursing calls.





Take care of yourself this winter

- If you become ill call for advice, get tested as soon as possible
- Go back to basics:
 - Wear a mask
 - Vaccinate against both flu and COVID
 - Avoid large gatherings
 - Maintain distance at social gatherings and hold outside when possible
 - Wash your hands often and use hand sanitizer when that's not possible.



And by all means,
continue doing things
you love to do!

The masked singer.



Questions from last month and wrap up

1). Antibody Tests

Does Kaiser run an antibody test which will pick up vaccine antibodies or vaccine plus infection antibodies? Why cannot someone with an appropriate reason have the test?

We can technically run this test but its highly discouraged as its not well known how the result truly reflects protection or need for further immunization. "don't order a test where you don't know what the result means"

Lindsay

2). Don : I'd like her to talk about the new research that shows Moderna is more effective than Pfizer in terms of how long it lasts and its effectiveness against the variants.

I have not seen any literature which would suggest significant difference between the mRNA vaccines – Pfizer was available first and has been used more so we do have more data and time to gather information.

3). What is the current % of KP members vaccinated in the approved age groups?

Yes for 12 and above 77% first dose and 75% second dose; over 65: 90% both doses, 92% at least one dose

Anything else you want to be sure to get out to Senior Caucus members?

I'll reiterate the need for volunteers. We are struggling seriously with staffing everywhere. Volunteering to help with testing would be great. Be patient and kind when seeking care.... HC workers are hanging on by a thread, staff are leaving. This is the most difficult and stressful phase of the pandemic AND running of the delivery system I've ever experienced.

Chris,

Just saw a slide that would answer Don's question:

We are not seeing a difference in breakthrough cases with Moderna and Pfizer. Janssen does have more breakthrough cases but still below 1% internally.

KAISER PERMANENTE SARS-CoV-2 Positive Cases over Time from Fully Vaccinated Members i

This report displays the patients who were fully vaccinated (2 doses of Pfizer or Moderna vaccine or 1 dose of Johnson & Johnson vaccine), and were tested positive for COVID-19 14 days after the vaccination.

County	Internal Test?	Test Result Date	Vaccine Admin	COVID-19 Reason For Test	Vaccine Manufacturer	
(All)	(All)	(All)	(All)	(All)	(All)	■ Janssen ■ Moderna ■ Pfizer

	Total Vaccinated	Breakthrough	%Breakthrough
Janssen	49,841	350	0.70%
Moderna	240,017	773	0.32%
Pfizer	296,108	912	0.31%
Grand Total	585,966	2,033	0.35%



Senior Caucus opportunities

- ▶ Surveys and reviews of important patient information to be sent out by KP to members
- ▶ Focus groups on a variety of topics to input the patient voice before delivery system changes are made
- ▶ Caregiver support group
- ▶ Help with program planning

Jane McNamee:

Jane.mcNamee@kp.org

The masked singer.

